

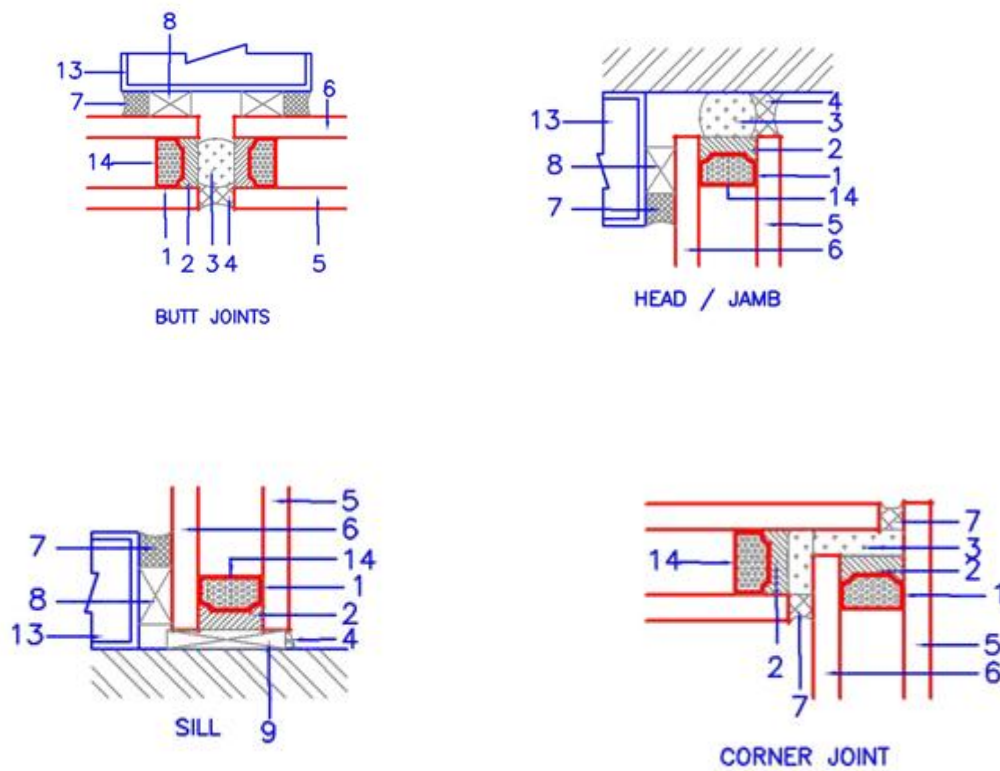
# Insulated Glass Units

## Glazing Specification

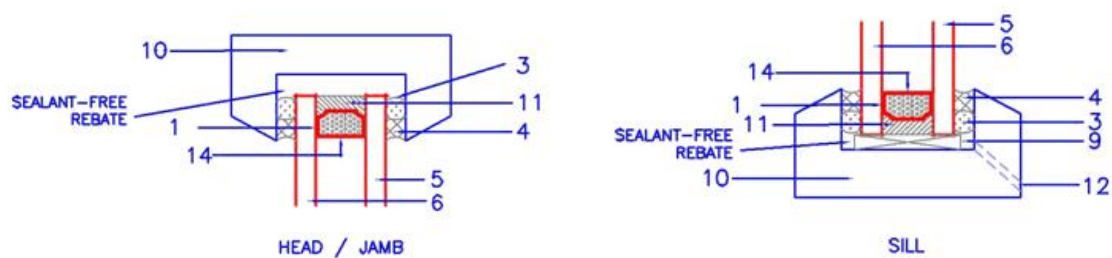
---

### Recommended Glazing Details

#### Typical Structural Glazing Details



#### Typical Frame Details



## CODE EXPLANATIONS

- 1 PRIMARY SEAL (PIB)
- 2 SECONDARY SEAL (DOW CORNING 982)
- 3 BACKER ROD (CLOSED-CELL PE RECOMMENDED)
- 4 WEATHER SEAL (DC991 & DC995 RECOMMENDED)
- 5 OUTER PANE
- 6 INNER PANE
- 7 STRUCTURAL SEALANT (DC995 RECOMMENDED)
- 8 SPACER BLOCK
- 9 SETTING BLOCK (PE OR PP RECOMMENDED)
- 10 WINDOW FRAME
- 11 SECONDARY SEAL (POLYSULPHIDE)
- 12 WEEP HOLE
- 13 SUPPORTING FRAME
- 14 METAL SPACER FILLED WITH DESICCANT)

## NOTES:

- 1 THIS DRAWING SHALL BE READ IN CONJUNCTION WITH K&K GLASS TECHNICAL SPECIFICATION FOR GLAZING.
- 2 IN GENERAL, SEALANTS ARE NOT TO BE USED TO SECURE GLAZING BLOCKS IN SEALANT-FREE REBATE
- 3 ALL MATERIALS USED FOR GLAZING MUST BE CHECKED FOR COMPATABILITY WITH THE COMPONENTS OF THE IGU
- 4 INCOMPATIBLE SEALANTS AND GLAZING BLOCKS WILL VOID THE WARRANTY

### Pease note:

Information provided is issued for specification reference only and should not be used as a substitute for detailed technical advice. K&K Glass disclaims any responsibility for loss or damage suffered from the use of such data. To the best of our knowledge the information detailed above was correct at the time this document was published and printed.

Acknowledgement: K&K Glass would like to acknowledge and thank Viridian for their assistance in compiling this document